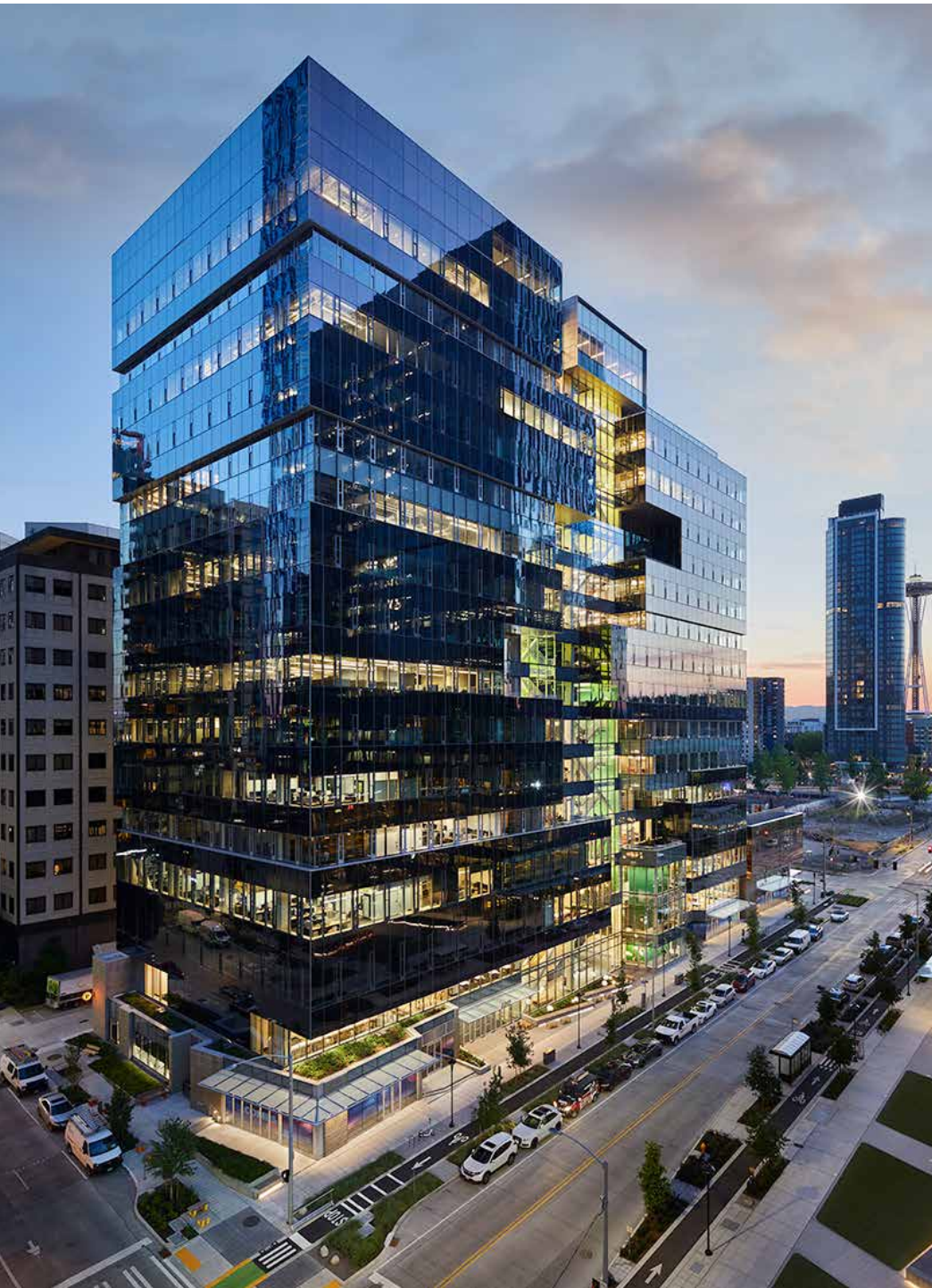


# REBECCA CHAU

Selected Works



## FRONTIER - AMAZON BLOCK 18

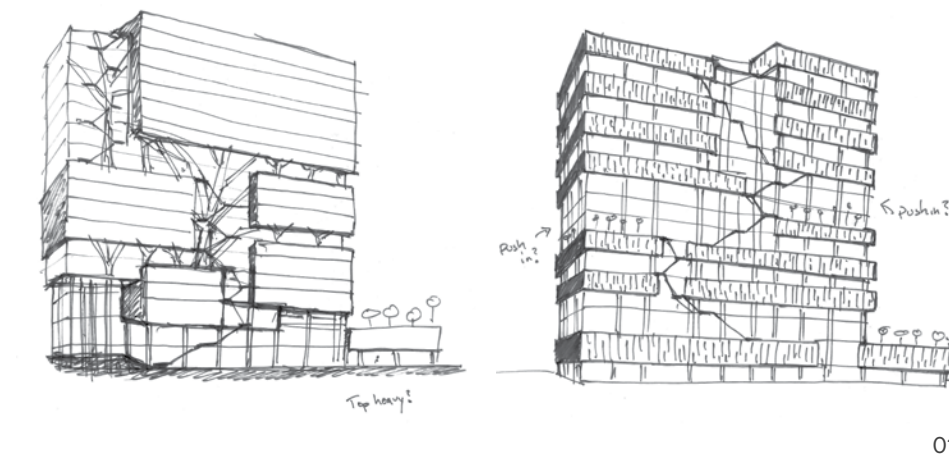
Designed to be a treehouse amid Amazon's downtown forest of buildings. The constraints of the half-block freed us to experiment formally (and playfully). Rather than using the wrapper to distinguish Block 18, our design pulls apart the structure of the tower and connects the forms with a winding staircase inspired by childhood climbs.

My time on Block 18 started with concept design and wound all the way to construction documentation. The freedom to play with interior and exterior concepts was a joy. My work dealt with the exterior and interior architectural design.



Graphite Design Group  
Seattle, WA  
Completed 2021

- 01 Concept Sketches
- 02 Context Map
- 03 North Elevation
- 04 Main Entry Exterior
- 05 Landscape Diagram



01



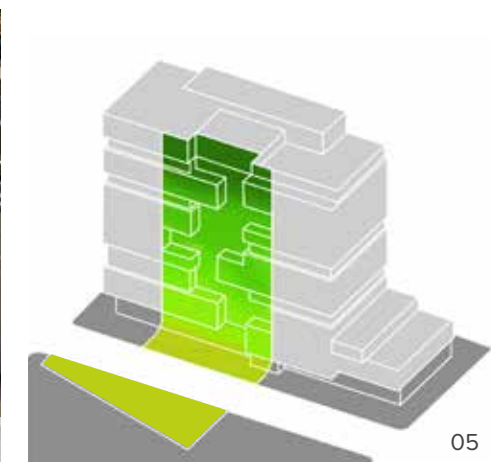
02



03



04



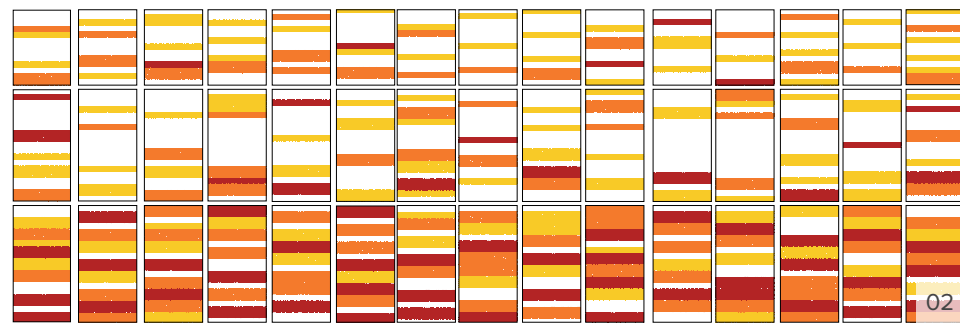
05



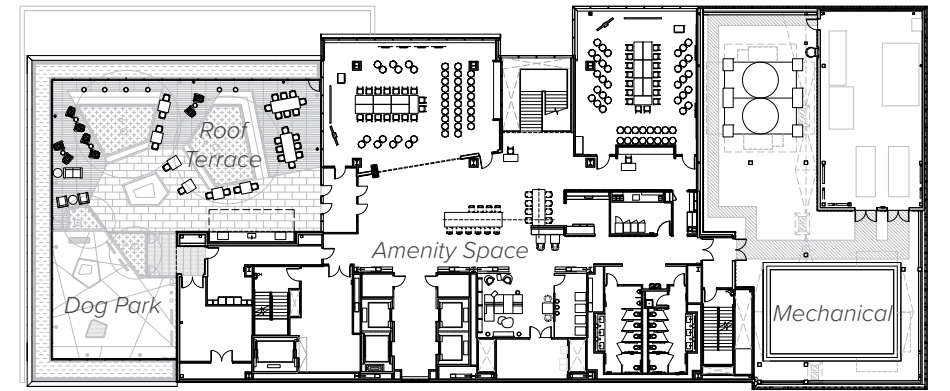
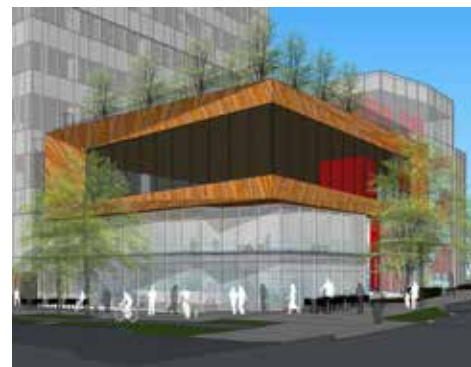
## PODIUM FACADE STUDIES

The northwest annex of Block 18 had a wonderful mandate: make it even more playful. This section of the project houses a daycare, and my design studies explored different ways to foreground the building's roots in childhood.

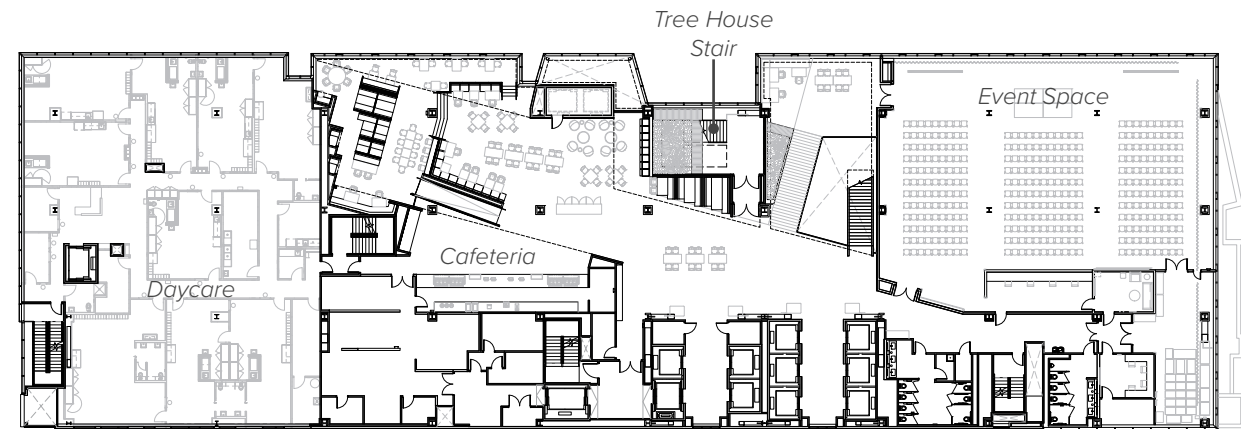
The parametric design – inspired by the irregular planks hammered up a treehouse's trunk – is a digitally printed ceramic coating on glass. Sturdier than my own childhood treehouse, too.



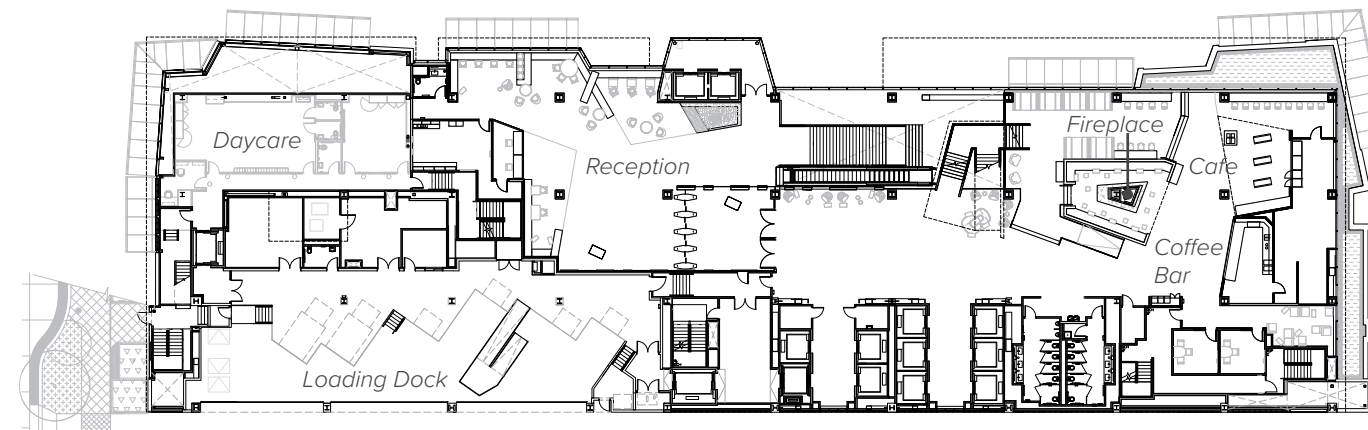
- 01 West Elevation
- 02 Pattern Layout
- 03 Rendering
- 04 Parametric Pattern Elements
- 05 Alternative Concept Designs



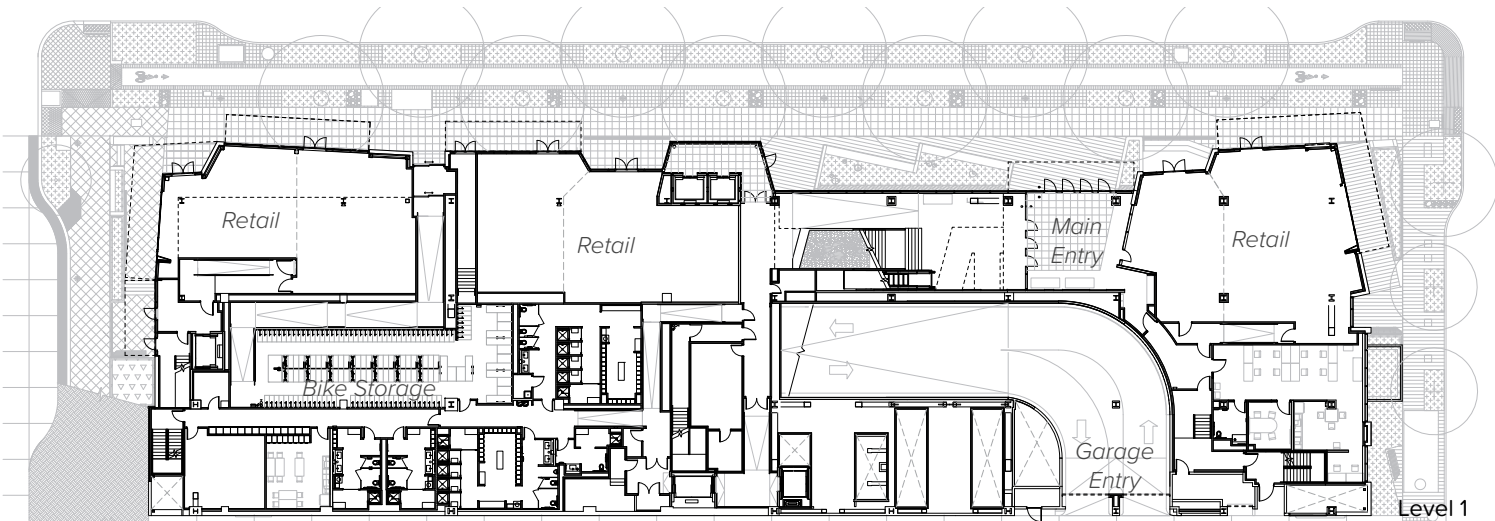
Level 17



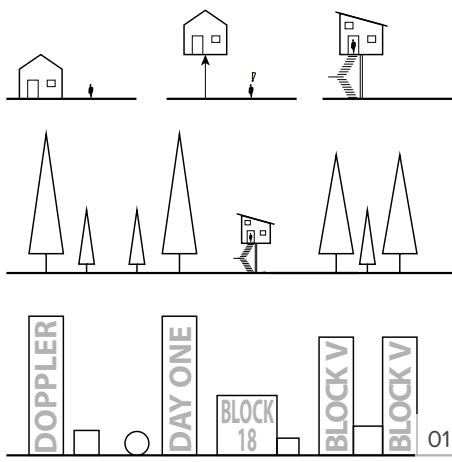
Level 3



Level 2



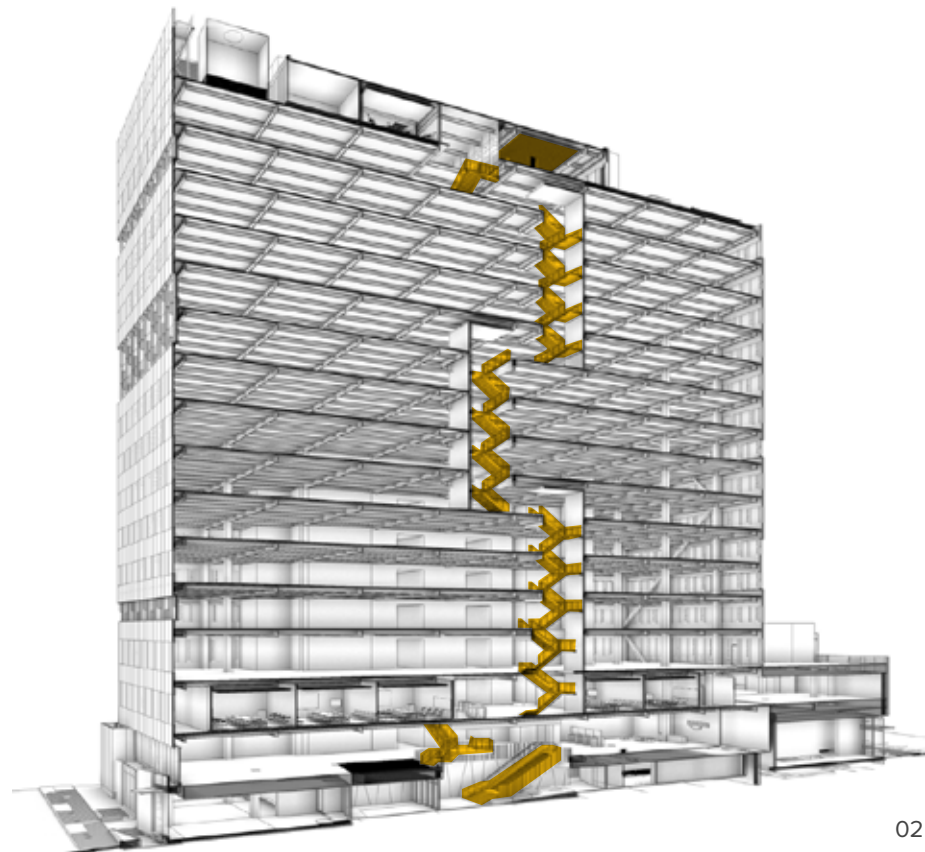
Level 1



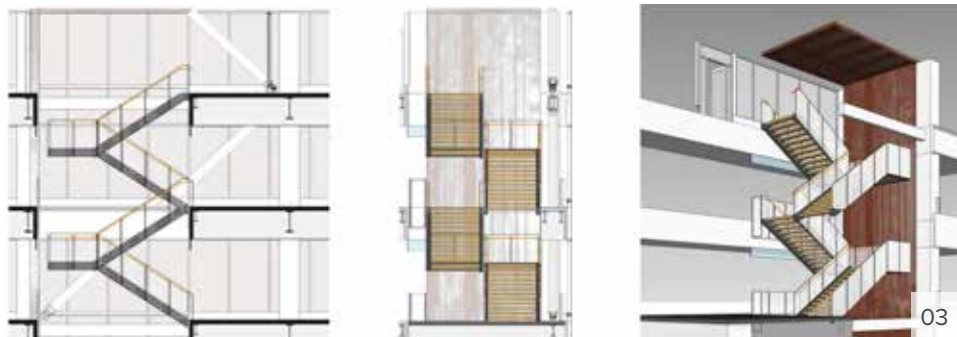
# TREE HOUSE STAIR

This design returns vertical circulation to its joyful roots: climbing. Remember when stairs were an adventure? We brought the stairway out into the daylight with an organic-feeling form. These are stairs that adults spontaneously run up, forgetting their age.

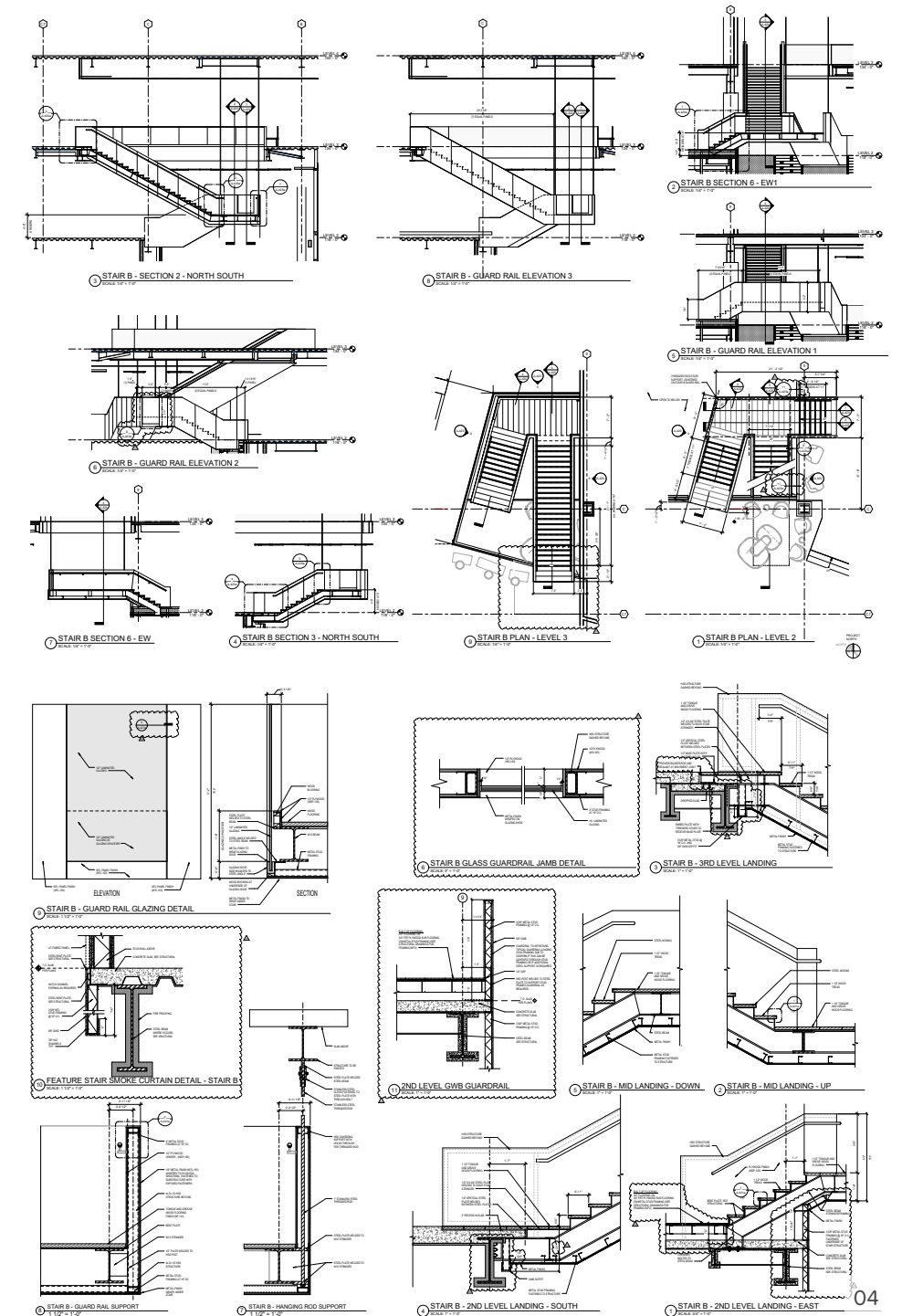
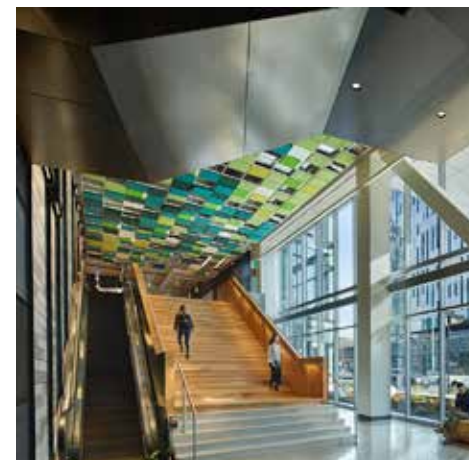
- 01 Concept Diagram
- 02 Vertical Circulation Diagram
- 03 Stair Material Study
- 04 Stair Details and Drawings



02



03



04



01



02



03

## WEST MAIN - BELLEVUE PLAZA

This trio of towers is inspired by the site itself, which had a creek running through it in the early days of Bellevue. Fluid movement unifies the project, with a central plaza separating towers 1 and 2, imitating the creek's erosion of its own path. A wave wraps the entire campus, rippling across all three facades – each tower's face is shaped by a different stage of the wave, articulated by thousands of fins and printed glass panels.

Graphite Design Group  
Bellevue, WA  
To Be Completed Fall 2023

- 01 Rendering View from Main Street
- 02 Photo from 106th Ave
- 03 Aerial Rendering
- 04 Rendering from Main Street and 106th



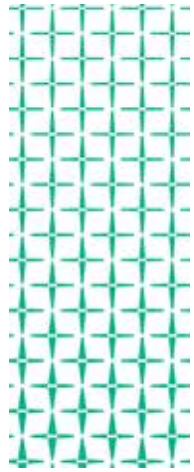
Level 1



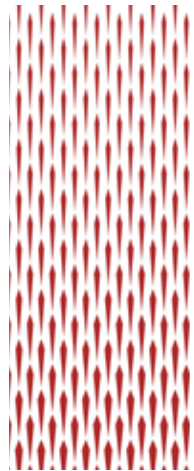
Level 5



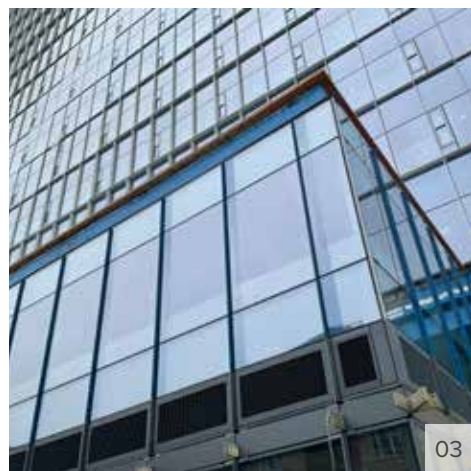
04



01



02



03

FRIT AND FIN PATTERNING

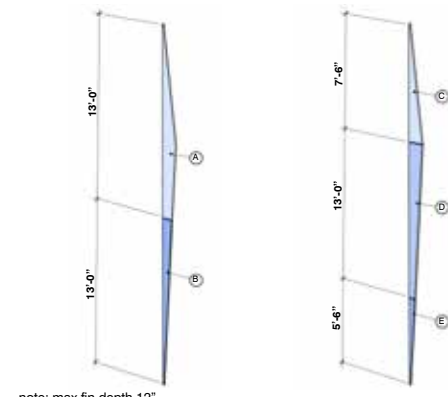
Each tower's identity is reinforced by the patterns shared by its facade fin and podium frit. All three designs capture the movement of the waveform across the property, while being identifiably distinct from each other for the people moving through the space.

- 01 Tower 3 Frit Design
- 02 Tower 2 Frit Design
- 03 Tower 1 Frit Design
- 04 Tower 1 Fin Design
- 05 Tower 2 Fin Design
- 06 Tower 3 Fin Design

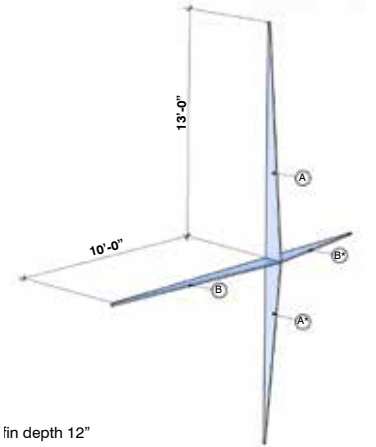


12" Fins

04

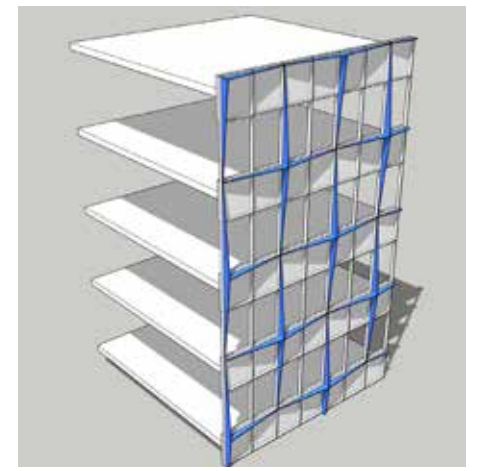
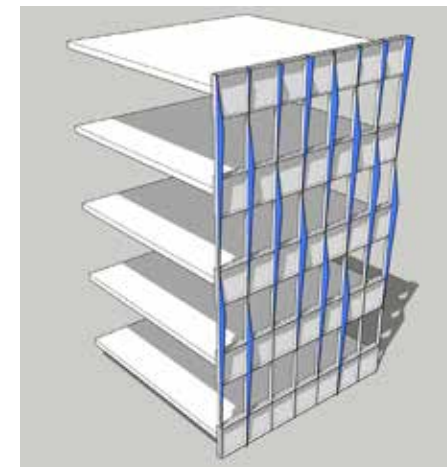
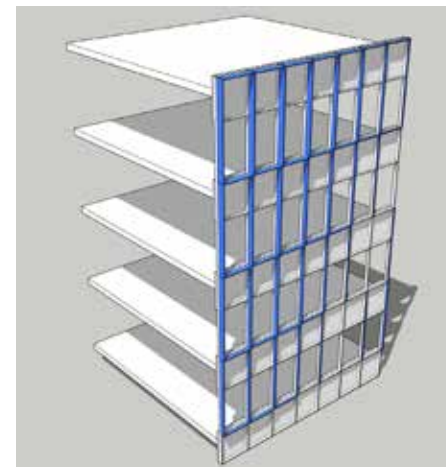


05



fin depth 12"

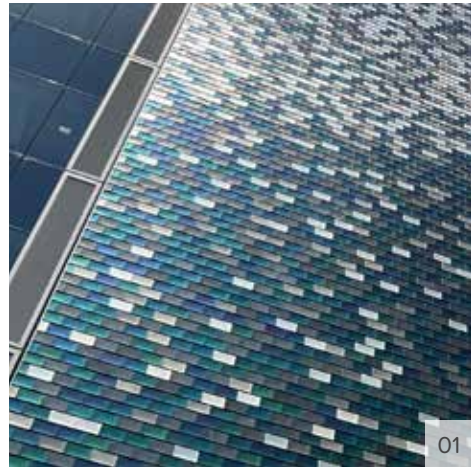
06



## CORE WALL TILE

Bringing fluid movement to the verticality of the towers? Not easy! This design breaks the space into six zones of stainless steel tiles, with color distributions that flow together.

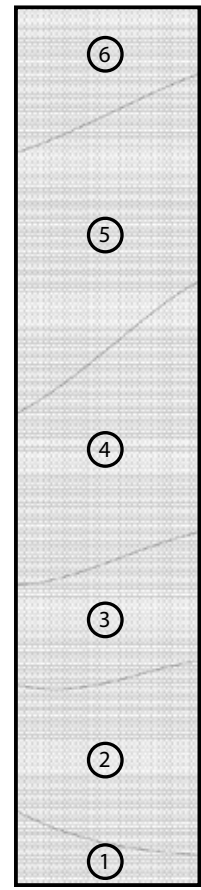
- 01 Tower 3 Closeup
- 02 Core Wall Design Diagrams
- 03 Tower 1 Core Wall
- 04 Tower 2 Core Wall
- 05 Tower 3 Core Wall



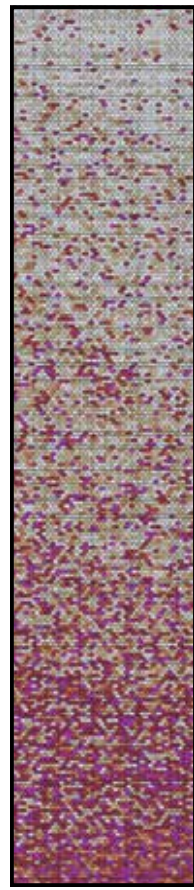
01



Pattern Precedent

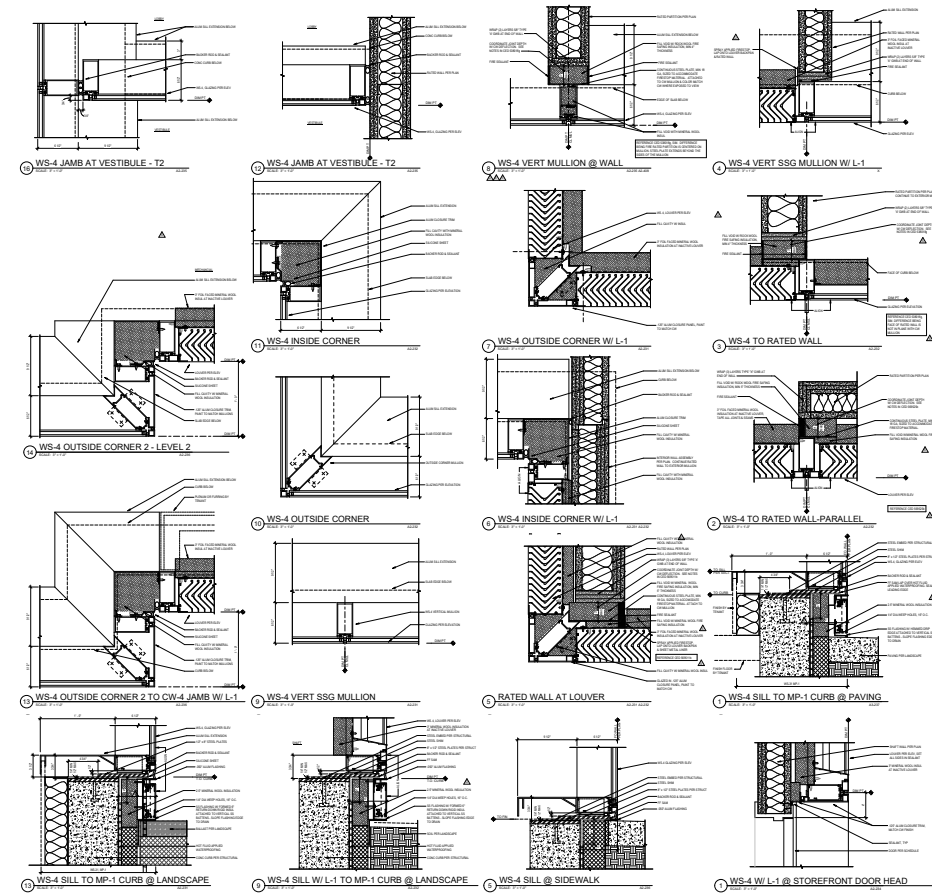


Tile Mix Distribution Zones



Generated Pattern

02



## PODIUM CURTAIN WALL

One of the most complex parts of the project, serving the varied needs of pedestrians and retailers while also marking each building's program shift. Colored frit and fins gently demarcate the retail and office space in the same design language of fluid motion.



03



04



05





## NITRO - AMAZON BLOCK 21 MARY'S PLACE

Two buildings in the heart of Amazon's Seattle headquarters, including a portion of the podium dedicated to Mary's Place family shelter. The shared plaza is designed to welcome the public into the space and integrate Amazon into the neighborhood. Rising to the challenge of sporadic light amid downtown's other towers, Block 21's facade design creates an appearance of motion as the sun moves – inspired by great masses of starlings in flight.

Graphite Design Group  
Seattle, WA  
Completed 2020

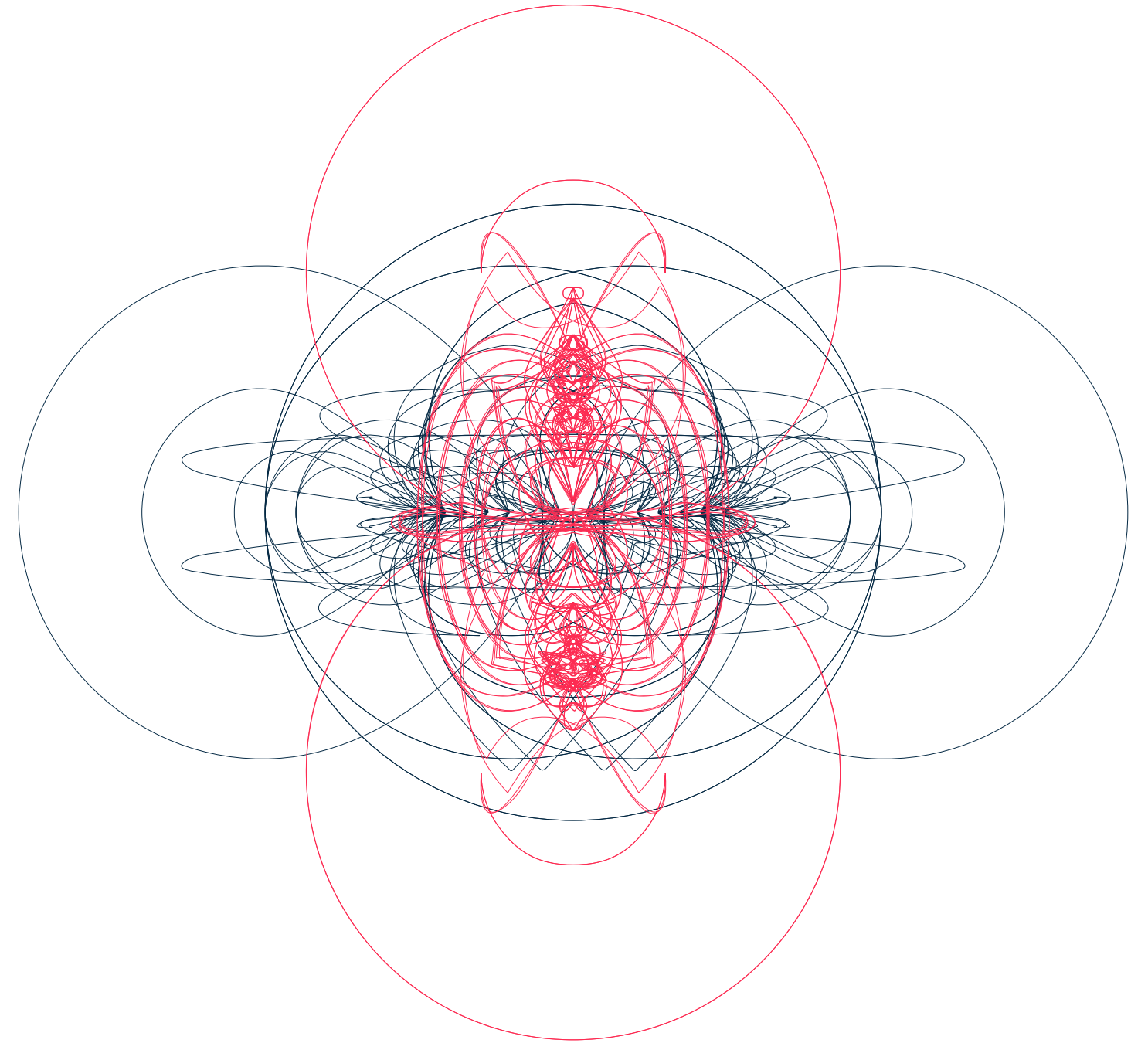


## LAKEFRONT BLOCKS

Graphite Design Group  
Seattle, WA  
Completed 2019

A woonerf divides this block in two for comfortable pedestrian flow. Since Americans tend to be less familiar with woonerfs, special design attention was paid to the structures and stylings that make the pathway inviting and curiosity-sparking – distinct from a plain ol' alleyway. Maritime theming through the block ties the building to its home on Lake Union, and when you approach by boat as the sun sets, the design looks like a true extension of the water.





## SAWHORSE REVOLUTION - VOLUNTEERING

I teach children how to use nail guns. Really! Sawhorse Revolution is a community non-profit that introduces Seattle high schoolers carpentry and architecture. Since 2019, I've helped the kids design and build cultural spaces, tiny houses, and even a small library that houses the largest extant collection of Black Panther newspapers. The students are going to create real change in the world, and I'm pretty lucky to see them get their start.